

DocuCentre-IV

C5575

C4475

C3375

C3373

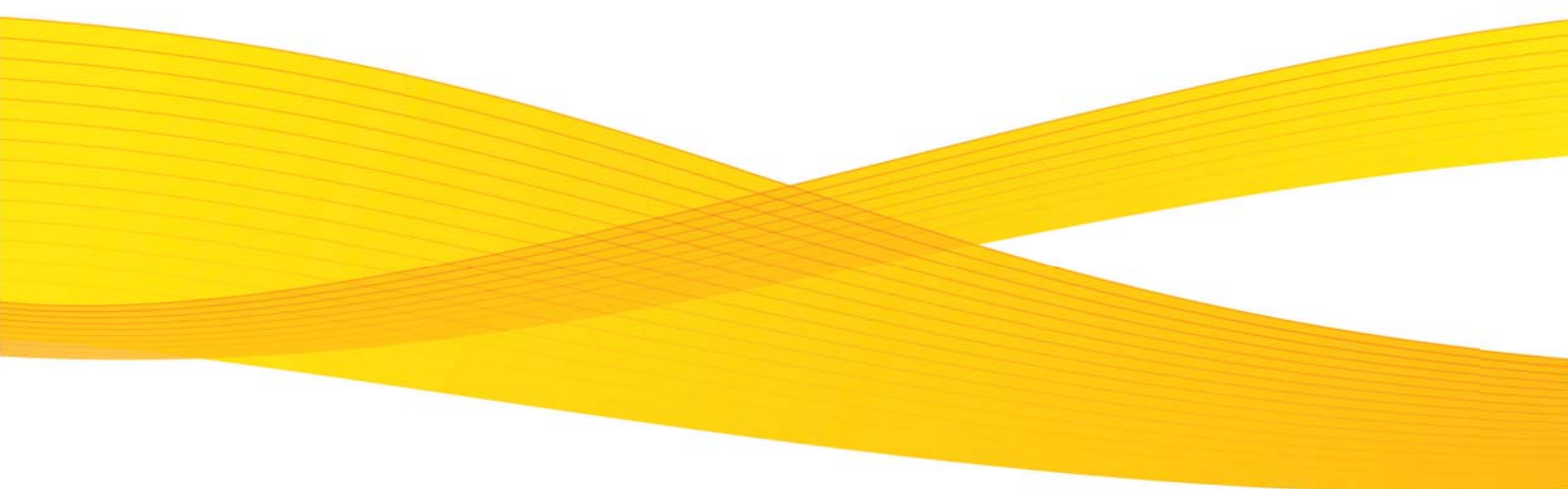


DocuCentre-IV

C5575 / C4475 / C3375 / C3373

Digital Colour Multifunction Device

Feature-packed to increase office efficiency



Environmental performance combined with stunning print performance

The DocuCentre-IV C5575/C4475/C3375/C3373 series is packed with a range of high performance functions to improve productivity and is perfect for demanding office environments.

Fuji Xerox has combined improved print performance with environmental protection by developing groundbreaking new technologies to further improve the environmental performance of its new multifunction devices. At the same time we've made sure that users can continue to enjoy effortless operations. These developments bring together new technology and services for superior environmental performance alongside user friendliness and ultimate productivity.

The multifunction device automatically detects the user.

Fuji Xerox has introduced its revolutionary "Smart WelcomEyes" technology*. The device is able to detect when an operator is approaching and automatically recovers from sleep mode, as if to welcome them. This clever technology eliminates unnecessary operational steps and the operator can use the device immediately. It also saves energy while the operator achieves new productivity levels, without even noticing.

* Fuji Xerox is applying for a trademark registration of Smart WelcomEyes.

Smart Energy Management Technology. Our innovative Smart Energy Management Technology better manages energy usage by only using what is necessary, when it's necessary. This enables the device to activate only the modules required by the user, saving energy and reducing CO₂ emissions. What's more, offices will enjoy a much quieter environment.

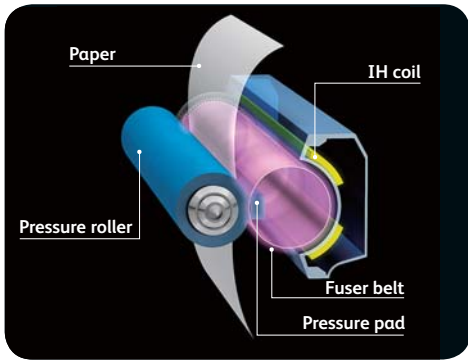
From sleep mode to full operation in 2 seconds – no need to wait!

When the DocuCentre-IV C5575/C4475/C3375/C3373 multifunction device recovers from sleep mode, it takes only 2 seconds to wake up and start working. Due to Smart Energy Saving they experience no real waiting time.



Induction Heating Fusing Technology

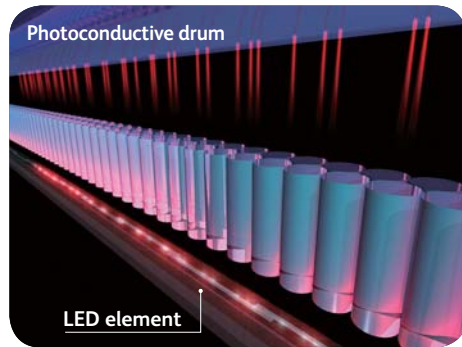
incorporates a thin, non-magnetic metal as the heating layer inside the fuser belt which enables greater energy efficiency. With this technology, the fusing unit does not require pre-heating and doesn't consume power when the machine is in standby mode. As a result, a fusing unit with the quickest start-up time of only 3 seconds providing Fuji Xerox with a tremendous competitive edge.



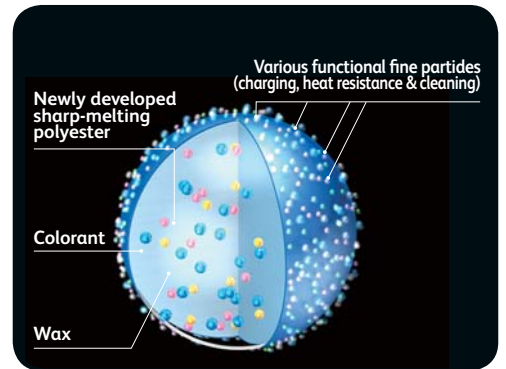
LED Scanner. The LED technology used as the light source for image scanning consumes less energy and gives you ultra-quiet operation.

Fuji Xerox has developed a high-precision, LED print head technology

“DELICIS” (Digitally Enhanced Lighting Control Imaging System) that achieves an output resolution of 1,200 x 2,400 dpi that is equivalent or even superior to that produced by a conventional laser raster output scanner (ROS) system. LED print head technology makes it possible to build even smaller devices and reduces power consumption.



EA-Eco Toner. This Emulsion Aggregation (EA) Ultra Low-Melt toner achieves a fusing temperature more than 20°C lower than conventional EA toner, reducing power consumption during fusion, as well as achieving a brilliant glossy output even on ordinary paper.



Advanced functions, yet even easier to use

The DocuCentre-IV C5575/C4475/C3375/C3373 is the perfect device to be used as the “nerve centre” of your business. It works effortlessly as the central device in an office to provide stable, trouble-free productivity and excellent image quality for every business requirement.

Dramatically increase your workflow efficiency. Cutting edge scanning functionality opens the door to better ways of getting work done. Scan to Email quickly distributes documents to multiple email addresses. Store files on the device, or in a personal directory. You can also scan documents to network folders, FTP sites and fax servers right from the device.

Store to Folder feature allows you to scan to a folder on the printer's hard drive to reprint on demand or retrieve via a web browser. Documents stored on the hard drive are displayed as thumbnails and up-close previews on the device touchscreen.

High-speed scanning delivers maximum productivity. The DocuCentre-IV C5575/C4475 multifunction devices are capable of scanning both sides of a document in a single pass, at a maximum rate of 140 images per minute for both colour and black-and-white documents. The lightweight duplex automatic document feeder can also hold a maximum of 130 sheets.

* Applicable only with the DADF B1-PC

Easy archiving, organising and searching. With scan to searchable PDF*, you can create a fully text-searchable file and integrate it into your workflow process in one easy step.

Significantly smaller scan files. The latest scan-export compression technologies reduce traffic on the network and accelerate document delivery.

Document Conversion to Word/Excel® formats for easy editing. The DocuCentre-IV C5575 series multifunction devices can detect text, tables and pictures in scanned images and convert them into Microsoft Word and Excel documents so you can edit them easily*. Paper documents and original data that have been lost can be regained and easily used, saving time and hassle for users by eliminating rekeying chores.

* The optional Advanced Scan Kit is required.

Walk-up simplicity. Print from and scan to any USB memory device for faster document delivery when you're not at your computer.



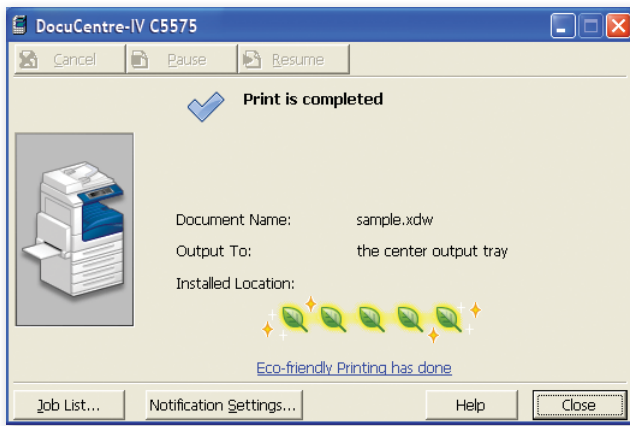
1
Optional
Wing Table

2
Four 500-sheet paper trays
adjustable up to A3

3
Optional integrated
stapler finisher

High resolution output – a genuine 2,400 dpi. The DocuCentre-IV C5575/C4475/C3375/C3373 can produce high resolution output of 2,400 dpi. Users can tailor the final output settings of their documents by selecting “standard”, “photo”, “presentation”, “design”, “CAD” or “POP” to suit the image type they require, as well as setting the colour balance or choosing an ICC profile.

Users can analyse the environmental impact of their print operations by checking the ecological rating display on the document monitor*. This function displays up to five leaves to indicate how environmentally friendly the print settings are.



* The document monitor is software that is installed on the computer. It can be downloaded from the Fuji Xerox website.

To speed up copying and faxing an express (simple) copy and fax feature is available that displays only the basic settings. This is provided in addition to the normal features.

Forwarding received fax documents. When faxes are received they can be stored in the device folders, and any required documents can be printed after checking thumbnail previews. This cuts waste and reduces paper use. Documents received in a folder can also be forwarded by fax, printed, and sent via e-mail, FTP, or SMB.

Faxes can be sent directly from PCs. This reduces the volume of paper required in an office and eliminates the need for unnecessarily printing faxes.

Eliminating spam faxes. If you do not want to receive faxes from specific or unlisted numbers they can be rejected. This handy function lets you eliminate indiscriminate direct mailing and wasteful printing of unwanted faxes.

IP Fax or FoIP offers a more cost efficient way of doing business. Faxes are sent and received through an IP-based network such as the internet. Faxes can be routed directly to an email account to conserve energy and paper.



Choose basic features like staple and hole punch (optional), or advanced capabilities to produce saddle-stitched booklets (unfolded)



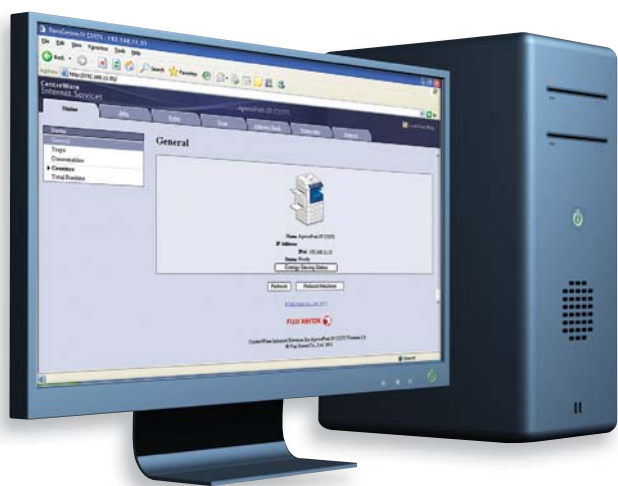
2,030-sheet A4 High Capacity Feeder (optional) can increase total capacity to 4,120 sheets



This high performance finisher features automatic stapling, hole-punching, folding and booklet making.

Reporting and management tools

CentreWare™ Internet Services software makes it easy for administrators to configure the device, upload address books, monitor usage and consumables remotely and establish auditing capabilities.



Manage colour printing to minimise costs. Control costs by nominating when colour can be used, and by whom. This ensures that colour is available to those individuals who truly leverage its power, such as sales teams and the marketing department.

Driverless printing for remote users with CentreWare Internet Services web utility. Any connected computer can immediately output PDF, TIFF, JPEG and Docuworks files from any network computer, without using a print driver at all.

Device Configuration Tool allows for simplified device configuration and administration, and lets you easily clone configurations to other similar devices on the network.

Security at every level

Secure print helps prevent unauthorised viewers from seeing documents by holding jobs in the print queue until the user is authenticated.

Image overwrite security feature clears or “overwrites” all traces of any document image data remaining on the hard drive after a print, copy, scan or fax job (when enabled).

Hard disk encryption helps ensure that unauthorised users can't access stored documents.

IPv6 support includes full enablement of the new IPSec standard.

Internal security provides an additional measure of security, providing IP filtering, domain filtering and port blocking.

Device authentication restricts access to copy, print, scan and fax features by validating user names and passwords before use. Audit Log capabilities let you know who sent what, and when.

Embedded authentication enhances security and increases convenience. The DocuCentre-IV C5575/C4475/C3375/C3373 includes an authentication function so that unauthorised users are restricted from using the device. Each user's history can be collected from the job history record. By adding an embedded card reader* to the device, users can employ swipe card authentication for extra security. Use of the device can be restricted to specified users and linked with specific functions to enhance security and improve convenience for authorised users.

*An external or internal type IC Card Reader is available.



Specifications of DocuCentre-IV C5575 / C4475 / C3375 / C3373 Series

Fax Function (Optional)

| | |
|----------------------|---|
| Send Document Size | Max: A3, 11 x 17", Long document (Max. 600 mm) |
| Recording Paper Size | Max: A3, 11 x 17", Min: A5 |
| Transmission Time | 2 seconds and more but fewer than 3 seconds |
| Transmission Mode | ITU-T G3 |
| Scanning Resolution | Standard: 8 x 3.85 lines/mm, 200 x 100 dpi Fine: 8 x 7.7 lines/mm, 200 x 200 dpi Super Fine (400 dpi): 16 x 15.4 lines/mm, 400 x 400 dpi Super Fine (600 dpi): 600 x 600 dpi |
| Coding Method | MH, MR, MMR, JBIG |
| Transmission Speed | G3:336/312/288/264/240/216/192/168/144/120/96/72/48/24kbps |
| Applicable Lines | Telephone Subscriber Line PBX, PSTN, Max. 3 ports |

Direct Fax Function (Optional)

| | |
|-------------------------------|---|
| Document Size | A3, B4, A4 |
| Scanning Resolution | Same as the fax function |
| Transmission Speed | Same as the fax function |
| Applicable Lines | Same as the Fax Function |
| Operating System ¹ | Windows® 2000, Windows® XP, Windows Server® 2003, Windows Vista®, Windows Server® 2008, Windows® 7, Windows® XP Professional®64, Windows Server® 2003®64, Windows Vista® x64, Windows Server® 2008®64, Windows Server® 2008 R2, Windows® 7 x64, Mac OS X 10.5/10.6/10.7 |

¹Please refer to the Fuji Xerox website for the latest information of the compliant OS.

Internet Fax Function (Optional)

| | |
|---------------------|---|
| Document Size | A3, B4, A4 |
| Scanning Resolution | Same as the fax function |
| Output Format | Format: TIFF-FX, Compression Method: MH, MMR, JBIG |
| Profile | TIFF-S, TIFF-F, TIFF-J |
| Protocol | Outgoing Mail Server: SMTP, Incoming Mail Server: SMTP, POP3 |
| Connectivity | Standard: Ethernet 100BASE-TX/10BASE-T Optional: Ethernet 1000BASE-T |

IP Fax (SIP) Function (Optional)

| | |
|---------------------|---|
| Document Size | Same as the fax function |
| Scanning Resolution | Same as the fax function |
| Protocol | SIP, JT-T.38 |
| Coding Method | Same as the fax function |
| Connectivity | Standard: Ethernet 100BASE-TX/10BASE-T Optional: Ethernet 1000BASE-T |

Duplex Automatic Document Feeder B1-C¹ (Standard)

| | | |
|-----------------------|--|-------------|
| | DC-IV C3375 | DC-IV C3373 |
| Type | Duplex Automatic Document Feeder | |
| Original Paper Size | Max: A3, 11 x 17", Min: A5 ² 38 - 128 gsm (Duplex: 50 - 128 gsm) | |
| Capacity ³ | 110 sheets | |
| Feeding Speed (A4LEF) | BW: 35ppm, Color: 35ppm | |
| Dimensions / Weight | W 560 x D 498 x H 125 mm, 8 kg | |

¹Available on DC-IV C3375/C3373 models only.

²Non-standard paper size single-sided mode: 125 x 85mm.

³64 gsm paper.

Duplex Automatic Document Feeder B1-PC¹ (Standard)

| | | |
|-----------------------|--|---------------|
| | DC-IV C5575 | DC-IV C4475 |
| Type | Duplex Automatic Document Feeder | |
| Original Paper Size | Max: A3, 11 x 17", Min: A5 38 - 128 gsm (In Duplex: 50 - 128 gsm) | |
| Capacity ² | 130 sheets | |
| Feeding Speed (A4LEF) | BW: 55 ppm | BW: 45 ppm |
| | Color: 50 ppm | Color: 45 ppm |
| | BW: 35 ppm | BW: 35 ppm |
| | Color: 35 ppm | Color: 35 ppm |
| Dimensions / Weight | W 560 x D 498 x H 140 mm, 11 kg | |

¹Standard for DC-IV C5575/C4475 models only. Optional for AP-IV C3375/C3373 models.

²80 gsm paper.

High Capacity Feeder (HCF B1) (Optional)

| | |
|--------------------------------|---|
| Paper Size / Paper Weight | A4 LEF, 8.5 x 11" LEF, B5 LEF, 55 - 216 gsm |
| Capacity ¹ | 2,030 sheets |
| Dimensions / Weight | W 389 x D 610 x H 380 mm, 29 Kg |
| Space Requirement ² | W 1,064 x D 699 mm |

¹80 gsm paper.

²Main Unit + Side Tray, Manual Feeding Tray is fully extended.

Finisher-A1 (Optional)¹

| | |
|-------------------------------|---|
| Type | Sort (Offset available) / Stack (Offset available) |
| Paper Size / Paper Weight | Max: A3, 11 x 17", Min: Postcards (100 x 148 mm), 55 - 220 g/m ² |
| Stacker Capacity ² | [Without Stapling] A4: 500 Sheets, B4: 250 Sheets, A3 or larger: 200 Sheets, Mixed Size Stacking ³ : 250 Sheets, [With Stapling] 30 Sets |
| Finisher Tray | |

| | |
|-----------------------------|--|
| Stacker Capacity | A4: 50 Sheets (90gsm or less), B4 or larger: 30 Sheets (90gsm or less) |
| Size | Max: A3, 11 x 17", Min: B5LEF |
| Position | Single stapling (Front/Angled) |
| Dimensions / Machine Weight | W 559 x D 448 x H 246 mm, 12 kg |
| Space Requirement | W 1,129 x D 699 mm |

¹The Optional Finisher-A1 cannot be installed on DocuCentre-IV C5575/C4475.

²64gsm paper.

³When larger size sheets are stacked on top of smaller size sheets.

⁴Main Unit + Finisher A1, when Extension Tray is pulled out and Bypass Tray is fully extended.

Note: The Optional Finisher-A1 cannot be installed on DocuCentre-IV C5575/C4475, DocuCentre-IV C5575/C4475.

Duplex Output Unit

| | |
|-----------------------|--|
| Applicable Paper Size | Max: SRA3(320 x 450mm), 12 x 18"(304.8 x 457.2mm), A3, Min: A5 |
| Paper Weight | 60-220gsm |

Finisher-B1 (Optional)

| | |
|----------------------------------|--|
| Type | Sort (Offset available) / Stack (Offset available) |
| Paper Size / Output Paper Weight | Max: A3, 11 x 17", Min: B5, 55 - 220 gsm |
| Stacker Capacity ² | [Without Stapling] A4: 2000 Sheets, B4: 1,000 Sheets, Mixed Size Stacking ³ : 300 Sheets [With Stapling] A4: 100 Sets or 1,000 Sheets, B4 or larger: 75 Sets or 750 Sheets Booklet / Fold ⁴ : 50 Sets or 600 Sheets, Fold ⁴ : 500 Sheets |

| | |
|--------------------|---|
| Staple | |
| Capacity | 50 Sheets (90gsm or less) |
| Paper Size | Max: A3, 11 x 17", Min: B5LEF |
| Position | Single stapling (Front/Angled, Rear/Straight), Dual stapling(Parallel to the edge) |
| Punch ⁵ | |
| Paper Size | A3, 11 x 17", B4, A4, A4 LEF, Letter 8.5 x 11", Letter 8.5 x 11" LEF, B5 LEF |
| Number of Holes | 2/4-hole punch, 2/3- hole punch (US Specifications) |
| Paper Weight | 55 - 200 gsm |

| | |
|--------------------------------|--|
| Booklet Finishing ⁶ | |
| Capacity | Saddle Staple: 15 sheets, Fold: 5 sheets |
| Paper Size | Max: A3, 11 x 17", Min: A4, Letter (8.5 x 11") |
| Paper Weight | Saddle Staple: 64 - 80 gsm, Fold: 64 - 105 gsm |
| Dimensions / Weight | W620 x D552 x H987mm ⁷ , 28kg, Booklet Finisher attached: W620 x D597 x H1,057mm ⁸ , 37kg |

| | |
|--------------------------------|---|
| Space Requirement ² | W1,666 x D699mm Booklet Finisher attached: W1,666 x D709mm |
|--------------------------------|---|

¹Paper in the sizes larger than A3, 11 x 17" or smaller than B5 are delivered to the Center Tray.

²64 gsm paper

³When larger size sheets are stacked on top of smaller size sheets

⁴The optional Finisher B1 Booklet unit is required for features of saddle stapling / bi-folding. If the output after saddle-stapling/bi-folding is not removed from the tray, the next job may not be output. The similar situation may happen to the smaller paper size as well.

⁵Optional 2/4 Hole Punch kit or optional Finisher B1 2/3 Hole Punch kit(US Specifications) is required.

⁶Inner connector within the body is excluded.

⁷Main Unit + Finisher B1, when Extension Tray is pulled out and Bypass Tray is fully extended.

Finisher-C1 (Optional)

| | |
|--|--|
| Type | Sort / Stack |
| Output Tray | Sort / Stack |
| Finisher Tray | Sort (Offset available) / Stack (Offset available) |
| Paper Size / Paper Weight ¹ | |
| Output Tray | Max: SRA3(320 x 450mm), Min: B5, 55 - 220 gsm |
| Finisher Tray | Max: SRA3(320 x 450mm), Min: B5, 55 - 220 gsm |
| Stacker Capacity ² | |
| Output Tray | 500 Sheets (A4) |
| Finisher Tray | [Without Stapling] A4: 3,000 Sheets, B4 or larger: 1,500 Sheets, Mixed Size Stacking ³ : 300 Sheets [With Stapling] A4: 200 Sets or 3,000 Sheets, B4 or larger: 100 Sets or 1,500 Sheets |

| | |
|--------------------------------|---|
| Staple | |
| Capacity | 50 Sheets (90gsm or less) |
| Paper Size | Max: A3, 11 x 17", Min: B5 |
| Position | Single stapling(Front/Rear,Angled), Dual stapling(Parallel to the edge) |
| Punch | |
| Paper Size | A3, 11 x 17", B4, A4, A4 LEF, Letter (8.5 x 11"), Letter (8.5 x 11") LEF, B5LEF |
| Number of Holes | 2- hole punch (Optional:US2/3Holes) |
| Paper Weight | 55 - 200 gsm |
| Dimensions / Weight | W 817 x D 639 x H 1,058 mm ⁴ , 60 kg |
| Space Requirement ² | W 1,863 x D 699 mm |

¹Paper in the sizes smaller than B5 are delivered to the Center Tray.

²64gsm paper.

³When larger size sheets are stacked on top of smaller size sheets.

⁴Inner connector within the body is excluded.

⁵Main Unit + Finisher C1, when Extension Tray is pulled out and Bypass Tray is fully extended.

Booklet Finisher-C1 (Optional)

| | |
|--|---|
| Type | Sort / Stack |
| Output Tray | Sort (Offset available) / Stack (Offset available) |
| Finisher Tray | Sort (Offset available) / Stack (Offset available) |
| Booklet Tray | Sort / Stack |
| Paper Size / Paper Weight ¹ | |
| Exit Tray | Max: SRA3 (320 x 450mm), 12 x 19" (304.8 x 482.6mm), Min: B5, 55 - 220 gsm |
| Finisher Tray | Max: SRA3 (320 x 450mm), 12 x 19" (304.8 x 482.6mm) Min: B5, 55 - 220 gsm |
| Booklet Tray | Max: SRA3 (320 x 450mm) , 12 x 18" (304.8 x 457.2 mm) Min: A4, Letter (8.5 x 11"), 64 - 90 gsm |

| | |
|-------------------------------|--|
| Stacker Capacity ² | |
| Output Tray | 500 Sheets (A4) |
| Finisher Tray | [Without Stapling] A4: 1,500 Sheets, B4 or larger: 1,500 Sheets, Mixed Size Stacking ³ : 300 Sheets [With Stapling] A4: 200 Sets or 1,500 Sheets, B4 or larger: 100 Sets or 1,500 Sheets |
| Booklet Tray | 20 Sets ⁴ |

| | |
|------------------|---|
| Stacker Capacity | 50 Sheets (90gsm or less) |
| Paper Size | Max: A3, 11 x 17", Min: B5 |
| Position | Single stapling(Front/Rear,Angled), Dual stapling(Parallel to the edge) |
| Punch | |
| Paper Size | A3, 11 x 17", B4, A4, A4 LEF, Letter (8.5 x 11"), Letter (8.5 x 11") LEF, B5LEF |
| Number of Holes | 2- hole punch (Optional:US2/3Holes) |
| Paper Weight | 55 - 200 gsm |

| | |
|--------------------------------|---|
| Booklet Finishing | |
| Capacity | Saddle Staple: 15 Sheets ⁵ , Middle-Fold: 5 Sheets, Bi-Fold: 1 Sheet |
| Paper Size | Max: SRA3 (320 x 450 mm), 12 x 18" (304.8 x 457.2 mm), Min: A4, Letter (8.5 x 11") |
| Paper Weight | Saddle Staple: 64 - 90 gsm ⁶ , Middle-Fold: 64 - 105 gsm, Bi-Fold: 64 - 220gsm |
| Dimensions / Machine Weight | W 876 x D 639 x H 1,058 mm, 90 kg |
| Space Requirement ² | W 1,922 x D 699 mm |

¹Paper in the sizes smaller than B5 are delivered to the Center Tray.

²64gsm paper.

³When larger size sheets are stacked on top of smaller size sheets.

⁴They are all output in the same size.

⁵Up to 14 sheets with cover. The saddle stapling capacity can be reset by Customer Engineer.

⁶The basis weight of a cover sheet shall be equal to or less than 220gsm. If the cover sheet of the basis weight in the range of 91-220gsm is used, the basis weight available for the main body of the document shall be 64-80 gsm.

⁷Inner connector within the body is excluded.

⁸Main Unit + Finisher C1 with Booklet Maker, when Extension Tray is pulled out and Bypass Tray is fully extended.

Side Tray (Optional)

| | |
|---------------------|--------------------------------|
| Paper Size | Same as the Copy function |
| Capacity | 100 Sheets |
| Dimensions / Weight | W 353 x D 469 x H 198 mm, 1 Kg |
| Space Requirement | W 1,064 x D 699 mm |

Specifications of DocuCentre-IV C5575 / C4475 / C3375 / C3373 Series

Copy Function

| | DC-IV C5575 | DC-IV C4475 | DC-IV C3375 | DC-IV C3373 |
|------------------------------------|--|-------------|-------------|-------------|
| Type | Console Type | | | |
| Memory | 2GB | | | |
| HDD ¹ | 160 GB (Usable Space: 128 GB) | | | |
| Colour Capability | Full Colour | | | |
| Scanning Resolution | 600 x 600 dpi | | | |
| Printing Resolution | 1,200 x 2,400 dpi (Multi-value-photo), 600 x 600 dpi (Text / Text-Photo / Photo / Map) | | | |
| Halftone/Printable Colors | 256 levels per color (16.7 Million colors) | | | |
| Warm-up Time | 28 sec. or less, or if the main power is ON, 24 sec. or less (Room temperature: 20°C) | | | |
| Original Paper Size | Max. 297 x 432 mm (A3, 11 x 17") for both sheet original and book original | | | |
| Output Paper Size | Max. SRA3 (320 x 450mm) 12.6 x 17.7" (320 x 449.6 mm), 12 x 18" (304.8 x 457.2 mm) [For Bypass Tray, 12 x 19" (304.8 x 482.6mm)] Min: A5 [For Bypass Tray, Postcard (100 x 148 mm), Envelope (120 x 235 mm)] Image loss: Lead Edge within 4mm, Trail Edge within 2mm, Right & Left Edges within 2mm | | | |
| Output Paper Weight ² | Tray: 60 - 256 gsm, Bypass Tray: 55 - 280 gsm | | | |
| First Copy Output Time | 3.7 sec <BW> 4.4 sec <BW> 4.9 sec <BW> 4.9 sec <BW> 5.2 sec <Colour> 5.7 sec <Colour> 6.4 sec <Colour> 6.4 sec <Colour> | | | |
| Reduction/Enlargement | Size-to-Size: 1:1 ± 0.7 % Preset: 1: 0.500, 1: 0.707, 1: 0.816, 1: 0.866, 1: 1.154, 1: 1.225, 1: 1.414, 1: 2.000 Variable: 1: 0.25 - 1: 4.00 (in 1% increments) | | | |
| Continuous Copy Speed ³ | A4/LEF / BS/LEF: 55 ppm <BW> 45 ppm <BW> 35 ppm <BW> 30 ppm <BW> 50 ppm <Colour> 45 ppm <Colour> 35 ppm <Colour> 30 ppm <Colour> A4 / B5: 39 ppm <BW> 32 ppm <BW> 27 ppm <BW> 23 ppm <BW> 36 ppm <Colour> 32 ppm <Colour> 27 ppm <Colour> 23 ppm <Colour> B4: 32 ppm <BW> 26 ppm <BW> 23 ppm <BW> 20 ppm <BW> 29 ppm <Colour> 26 ppm <Colour> 23 ppm <Colour> 20 ppm <Colour> A3: 27 ppm <BW> 22 ppm <BW> 20 ppm <BW> 17 ppm <BW> 25 ppm <Colour> 22 ppm <Colour> 20 ppm <Colour> 17 ppm <Colour> | | | |
| Paper Tray Capacity ⁴ | Standard: 4 Tray Model: 500 sheets x 4 Tray + Bypass Tray 90 sheets Optional: High Capacity Feeder B1 (A4 1 Tray): 2,030 sheets Max: 4,120 sheets (500 sheets x 4 Tray + High Capacity Feeder B1 + Bypass Tray) | | | |
| Continuous Copy ⁵ | 999 sheets | | | |
| Output Tray Capacity ⁶ | Upper Center Tray: 250 sheets (A4 LEF), Lower Center Tray: 250 sheets (A4 LEF) | | | |
| Power Supply ⁷ | 220-240V AC ±10%, 10/15A, 50/60Hz ±3% | | | |
| Power Consumption | 2.2kW or less (AC220V±10%), 2.2kW or less (AC220V±10%), 2.4kW or less (AC240V±10%), 2.4kW or less (AC240V±10%) Sleep Mode: 2.2W or less (AC220V) Sleep Mode: 2.2W or less (AC220V) Low Power Mode: 60W or less Low Power Mode: 42W or less Ready mode: 120W or less Ready mode: 60W or less | | | |
| Dimensions | W 640 x D 699 x H 1,128 mm (With DADF B1-P) W 640 x D 699 x H 1,143 mm (With DADF B1-PC) | | | |
| Machine weight ⁸ | C3375/C3373: 129kg (With DADF B1-P) C 5575/C4475: 133kg (With DADF B1-PC) | | | |
| Space Requirement | DADF B1-C: W1,064 x D699mm ⁹ DADF B1-PC: W1,108 x D699mm ⁹ | | | |

¹ The hard disk capacity is not totally available for customers.

² Documents may not be printed correctly depending on usage conditions.

³ The speeds may slow down due to image quality adjustment.

⁴ 80gsm paper.

⁵ Copy process may stop temporarily for stabilization of image quality.

⁶ OCT function is off.

⁷ Excluding Toner.

⁸ When the Bypass Tray is fully extended.

⁹ When the Bypass tray is fully extended, When stopper of DADF is turned on.

Print Function

| | |
|-------------------------------------|--|
| Type | Built-in Type |
| Continuous Print Speed ¹ | Same as the Fundamental Function / Copy Function |
| Print Resolution | Output Resolution: 1,200 x 2,400 dpi, 1,200 x 1,200 dpi Data Process Resolution: Standard: 600 x 600 dpi, High Resolution: 600 x 600 dpi, High Fine: 1,200 x 1,200 dpi |
| PDL | Standard: PCL6, PCL5, Optional: Adobe® PostScript® 3™ |
| Protocol | Ethernet (Standard): TCP/IP (Ipd, IPP, Port9100, SMB, WSD, Novell® NetWare®, ThinPrint®), Novell® NetWare® (IPX/SPX), NetBEUI (SMB), EtherTalk® |

Notes

- 1) If a problem occurs with the recording medium (hard disk) in the device, received data, stored data, and data registered in the settings, etc. may be lost. Please note that Fuji Xerox will not be held responsible for any damages resulting due to lost data.
- 2) The minimum holding period for replacement precision parts is 7 years after production is ceased for the main unit of the device.

Descriptions in this material, product specifications and / or appearances are subject to change without prior notice due to improvements. Please note that the product colour appears differently from the actual colour as a result of properties of papers or printing ink. Windows and Windows NT are registered trademarks of Microsoft Corporation. NetWare is a registered trademark of Novell, Inc. in the United States. Macintosh, Mac OS and Ether Talk are trademarks of Apple Computer, Inc. PostScript is a registered trademark of Adobe Systems Incorporated in each country. HP-GL is a registered trademark of Hewlett-Packard Company. Other company names or product names are registered trademarks or trademarks of each company.

Print Function

| | |
|-------------------------------|--|
| Operating System ¹ | Standard: Windows® 2000, Windows® XP, Windows Server® 2003, Windows Vista®, Windows Server® 2008, Windows® 7, Windows® XP x64, Windows Server® 2003 x64, Windows Vista® x64, Windows Server® 2008 x64, Windows Server® 2008 R2, Windows® 7 x64, Mac OS X 10.5-10.7 Adobe® PostScript® 3™: Windows® 2000, Windows® XP, Windows Server® 2003, Windows Vista®, Windows Server® 2008, Windows® 7, Windows® XP x64, Windows Server® 2003 x64, Windows Vista® x64, Windows Server® 2008 x64, Windows Server® 2008 R2, Windows® 7 x64, Mac OS X 9.2.2, Mac OS X 10.3.9 - 10.4.6/10.4.8 - 10.4.11/10.5-10.7 |
| Fonts | PCL6/5: 82 European fonts, 35 Symbol set, Chinese Font (ShuSong), Korean Fonts (Myungjo, Gothic, Round Gothic, Graphic, Kingso, Saemul) Adobe® PostScript® 3™: 136 European fonts TC/SC Additional Font ROM Kit: 4 Chinese Fonts (ShuSong, KaiTi, HeiTi, FangSong) |
| Emulation | HP-GL (HP7586B), HP-GL2/RTL (HP Design Jet 750C Plus), PCL5/6 (HP Color Laser Jet 5500), ESC/P-K (LQ1900K II), KSSM, KSS843, KSS895 |
| Connectivity | Standard: Ethernet 100BASE-TX / 10BASE-T, USB2.0 ⁴ Optional: Ethernet 1000BASE-T |

¹ The print speed may be lower according to the document type

² The Optional Adobe® PostScript® 3™ kit is required.

Mac OS 9.2.2, Mac OS X 10.3.9/10.4.0/10.4.1/10.4.2/10.4.3/10.4.4/10.4.5/ 10.4.6/10.4.8/10.4.9/10.4.10/10.4.11/10.5 are supported.

³ Please refer to the Fuji Xerox web site for the latest information of the compliant OS.

⁴ USB 2.0 is supported by Windows® 2000 English, Windows® XP English, Windows Server® 2003 English, Windows Server® 2008 English, Windows Vista, Mac OS 9.2.2, and Mac OS X 10.3.9/10.4.0/10.4.1/10.4.2/10.4.3/10.4.4/10.4.5/10.4.6/10.4.8/10.4.9/10.4.10/10.4.11/10.5/10.6/10.7.

Note: WSD stands for Web Services on Devices.

Scan Function

| | |
|-----------------------------|---|
| Type | Colour Scanner |
| Original Paper Size | Same as the Fundamental Function / Copy Function |
| Scanning Resolution | 600 x 600 dpi, 400 x 400 dpi, 300 x 300 dpi, 200 x 200 dpi |
| Scanning Halftone | Color: 10 bit input , 8 bit output for each for RGB color |
| Scanning Speed ¹ | BW: 70 ipm, Color: 70 ipm (With DADF B1 - C) BW: 80 ipm, Color: 80 ipm (With DADF B1 - PC, Simplex) BW: 140 ipm, Color: 140 ipm (With DADF B1 - PC, Duplex) [Fuji Xerox Standard Document (A4 LEF), 200 dpi, Store to Folder.] |
| Connectivity | Standard: Ethernet 100BASE-TX / 10BASE-T Optional: Ethernet 1000 BASE-T |
| Store to Folder | Protocol: TCP/IP (WebDAV, HTTP) File Format: Monochrome binary: TIFF, DocuWorks®, PDF®, XPS®, Grayscale: TIFF, JPEG®, DocuWorks®, PDF®, XPS®, Full Color: TIFF, JPEG, DocuWorks®, PDF®, XPS®, High Compression DocuWorks®, High Compression PDF®, High Compression XPS® Driver: The TWAIN interface is supported. Operating System: Windows® 2000, Windows® XP, Windows Server® 2003, Windows Vista®, Windows Server® 2008, Windows® 7, Windows® XP Professional x64, Windows Server® 2003 x64, Windows Vista® x64, Windows Server® 2008 x64, Windows Server® 2008 R2, Windows® 7 x64 |
| Scan to PC | Protocol: TCP / IP (SMB, FTP) Operating System: Windows® 2000, Windows® XP, Windows Server® 2003, Windows Vista®, Windows Server® 2008, Windows® 7, Windows® XP Professional x64, Windows Server® 2003 x64, Windows Vista® x64, Windows Server® 2008 x64, Windows Server® 2008 R2, Windows® 7 x64, Mac OS X 10.2.x/ 10.3.x/ 10.4.2/ 10.4.4/ 10.4.8/ 10.4.9/ 10.4.10/ 10.5/ 10.6, Novell® NetWare® 5.11/ 5.12 File Format: Monochrome binary: TIFF (Compression method: MH, MMR), DocuWorks, PDF, XPS, Grayscale/Full Color: TIFF (Compression method: JPEG), JPEG, DocuWorks, PDF, XPS, High Compression DocuWorks®, High Compression PDF®, High Compression XPS®, Microsoft® Word documents®, Microsoft® Excel® documents® |
| Scan to e-mail | Protocol: TCP/IP (SMTP) File Format: Monochrome binary: TIFF (Compression method: MH, MMR), DocuWorks, PDF, XPS, Grayscale/Full Color: TIFF (Compression method: JPEG), JPEG, DocuWorks, PDF, XPS, High Compression DocuWorks®, High Compression PDF®, High Compression XPS®, Microsoft® Word documents®, Microsoft® Excel® documents® |

¹ The scanning speeds vary depending on the document type.

² When scanned image is retrieved using CentreWare Internet Services.

³ When scanned image is retrieved using Network Scanner Utilities 3.

⁴ Please refer to the Fuji Xerox website for the latest information of the compliant OS.

⁵ Only FTP is supported as protocol.

⁶ To use this feature, an optional Advanced Scan Kit is required. The feature is designed to edit / reuse the text/image of the scanned / saved document. This feature is not to guarantee high-quality output result of text, diagrams and pictures on scanned document.

Note: XPS stands for XML Paper Specification.



Adobe PostScript 3



Reproduction Prohibitions

Please note that reproduction of the following is prohibited by law: Domestic and overseas bank notes and coins, government-issued securities, national bonds and local bond certificates. Unused postage stamps and post cards. Certificate stamps stipulated by law. The reproduction of works for copyright purposes (literary works, musical works, paintings, engravings, maps, cinematographic works, photographic works, etc.) is prohibited except when they are reproduced personally, at home or within limited range according to the above. This product is equipped with an anti-counterfeit feature. This feature is not intended to prevent illegal reproduction. Be extremely careful about the management of equipment used.



For Your Safe Use

Before using the product, read the Instruction Manual carefully for proper use.

Use the product with an appropriate adequate power source and voltage displayed. Be sure to establish a ground. In the case of a failure or short circuit, an electric shock may result.

For more information or detailed product specifications, call or visit us at

FUJI XEROX ASIA PACIFIC PTE LTD Malaysia Operations (993478A)

HQ: 10, Jalan Bersatu 13/4, 46200 Petaling Jaya, Selangor. Tel: 03-7882 2888 Toll-Free: 1-300-88-5880

BRANCHES Penang: 19-G-2, B Tower, Bayan Point, Medan Kampung Relau, 11900 Pulau Pinang. Tel: 04-643 5000 Fax: 04-644 4677 Johor Bahru: No. 21 & 23, Jalan Setia Tropika 1/28, Taman Setia Tropika, 81200 Kempas, Johor Bahru. Tel: 07-238 7868 Fax: 07-238 2678, 07-238 2178 Melaka: 43 & 45, Jalan Melaka Raya 13, Taman Melaka Raya, 75000 Melaka. Tel: 06-281 0466 Fax: 06-281 0408 Kota Kinabalu: Lot No. P1/G/42/Grd, 1st, 2nd, 3rd & 5th Floor, KK Time Square, 88100 Kota Kinabalu, Sabah. Tel: 088-486 888 Fax: 088-486 668 Kuching: 199A-201, Lot 3049 & 3050, Eastmoore Centre, 2 ½ Mile Jalan Rock, 93200 Kuching, Sarawak. Tel: 082-240 633, 082-254 633 Fax: 082-418 733

<http://www.fujixerox.com.my>

XEROX, and the sphere of connectivity design are trademarks or registered trademarks of Xerox Corporation in the U.S. and or other countries. Other trademarks are the property of their respective owners.

