

DocuScan C1500 Specifications

Item	Description
Scanning Size*1	<Width> 176(ISO B5 short edge) to 914.4(36")mm <Length> B/W mode: 210(A4 short edge) to 15,000mm (600dpi) Colour mode: 210(A4 short edge) to 7,500mm
Original thickness	0.05 to 0.2mm (max thickness for rear exit mode: 12.7mm)
Optical resolution	600dpi
Scanning resolution	600dpi x 600dpi (23.6 x 23.6 dots/mm)
Scanning halftone	Monochrome: Binary, Grey scale (binary), Grey scale Full colour: 256 levels of grey for each red, green, and blue colour channel
Scanning Speed	<B/W> Standard Mode: 152.4 mm/sec., Low Speed Mode: 76.2 mm/sec., Super Low Speed Mode: 25.4 mm/sec. <Full Colour> Standard Mode: 50.8 mm/sec., Low Speed Mode: 25.4 mm/sec.
Interface	USB 2.0 (high speed)
Output Format*2	Compression type: RAW (for monochrome scanning) JPEG (for colour scanning)
Driver	Wide format USB TWAIN source
Compliant OS	32 bit edition: Windows XP/Vista (English/SC) 64 bit edition: Windows XP/Vista (English/SC)

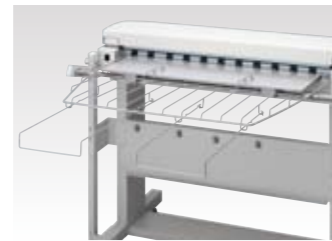
Item	Description
Power supply	AC 208-240V (-10% to +6%), 13A, 50/60hz common, Single Phase with earth line
Power consumption	Max. 480W Standby: 480W or less Low power mode: 5W or less
Warm-up time	Within 30 seconds at room temperature, 22 degrees centigrade (55% RH)
Dimensions (Width x Depth x Height)	Standard: 1,200 (W) x 595 (D) x 216 (H) mm Document catch tray + Stand installed: 1,256 (W) x 1,644 (D) x 1,064 (H) mm
Space requirement (Width x Depth)	Standard: 1,200 (W) x 595 (D) mm Document catch tray + Stand installed: 1,256 (W) x 1,644 (D) mm
Weight	45 Kg (excluding optional items)

*1 The maximum length for direct scanning may vary on the software used. Although the maximum scanning length of XDW is 2774mm (600dpi) / 4161mm (400dpi) / 5548mm (300dpi) / 6250mm (200dpi and 150dpi), the scanned images of XDW will be changed to the maximum length of 500mm by using DocuWorks 6. The maximum scanning length in full colour mode of TIFF/PDF/JPEG is 2772mm (600dpi) / 4159mm (400dpi) / 5545mm (300dpi) / 7500mm (200dpi and 150dpi).
*2 The file format depends on the application used.

Option



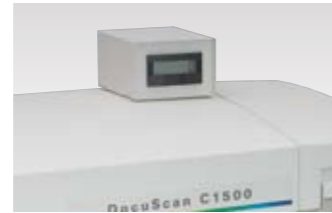
Document Stock Tray
(for stacking originals)



Document Catch Tray
(for holding original)



Long-size Document Holder



Scan Counter Kit



DocuScan C1500 mounted on the optional stand.

- The DocuScan C1500 conforms to Evaluation Criteria and Considerations for scanners under the Law of Promoting Green Purchasing, which promotes goods and services that help reduce environmental impact.
- As a participating member of the International Energy Star Program, our product meets the standards for International Energy Star Program products.



For more information or detailed product specifications, call or visit us at
Fuji Xerox Asia Pacific
 80 Anson Road, #37-00 Fuji Xerox Tower Singapore 079907
 Tel. 65 6766 8888 Fax. 65 6239 2764

<http://www.fxap.com.sg>

©2008 Fuji Xerox Co. Ltd. All rights reserved. XEROX, and the sphere of connectivity design are trademarks or registered trademarks of Xerox Corporation in the United States and/or other countries.

DocuScan
C1500



DocuScan C1500

Scan Documents Up To A0 Size In Colour



An A0-compatible colour scanner that fully utilises large-size document information.

Share and utilise electronic versions of large colour originals with the DocuScan C1500 Colour Scanner. Offering image adjustment and editing abilities, this productivity-enhancing tool is able to scan a wide range of large-size colour documents like colour drawings, blueprints and technical documents quickly and precisely. In addition, it acts as a colour copier for large documents* and is able to link with data management software.

* DocuWide C436EP or the equivalent colour output device and a network environment are necessary.
 *Photo shows DocuScan C1500 mounted on the optional stand.



Easy-to-use and highly sophisticated, the DocuScan C1500 Colour Scanner gives you a variety of methods to scan images to meet your needs.

Scan at speeds of 50.8 mm/s (colour) and 152.4 mm/s (monochrome) at 600dpi high resolution.

Able to produce high-resolution scans at high speed, the DocuScan C1500 allows large volumes of documents to be scanned quickly and efficiently. Simply slow scanning speeds down to low (1/2 speed) or ultra-low* (1/6 speed) mode to check if documents are being scanned to your satisfaction. The optional DW-Scan 3 software allows for simultaneous document scanning and image data transfer for smooth and efficient data input.

* When scanning monochrome documents.

Adjust density and saturation levels for individual colours to maximise the DocuScan C1500's scanning attributes.

Adjust density* and saturation* for red, yellow, green, light blue, blue, purple and black individually before scanning your document. Just move the slider bar for each colour to obtain the colour density and saturation you desire.

* Not applicable with Color Copy Assistant for DocuWide 1.0/Color Copy Assistant Pro for DocuWide 1.0. Density adjustment is not applicable when Colour Mode is set to full colour. Saturation adjustment is not applicable when Colour Mode is set to grey scale, monochrome binary or monochrome pseudo grey scale (binary).

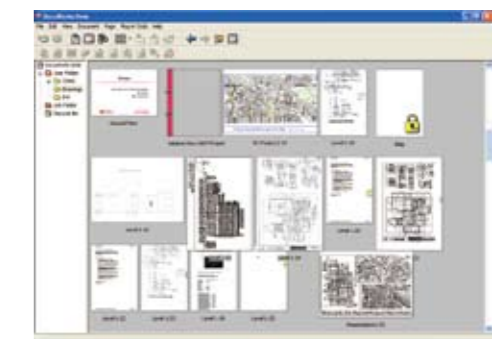


USB TWAIN driver colour saturation adjustment screen

Manage digitised images and technical data using Docuworks*

Use DocuWorks* document-handling software to scan, digitise and integrally manage paper drawings and technical data from A0 to A4 size. Original document sizes can be verified on-screen.

* Optional software.



DocuWorks Desk screen

Boost productivity with three direct scanning functions.

Capture data and images directly by connecting your PC to the DocuScan C1500 via USB. You can also adjust image quality without replacing originals and scan while printing.

● USB TWAIN Driver

Capture scanned data instantly by installing a scanner driver supporting TWAIN in your PC.



USB TWAIN driver screen.

● DW-Scan 3 Service*

Use the DW-Scan 3 Service* software to efficiently scan documents in high volume. Functions like file name editing, inclination correction and noise reduction lets you input data quickly while viewing the scanned image. Use the preview function to check image quality while working.

* Optional

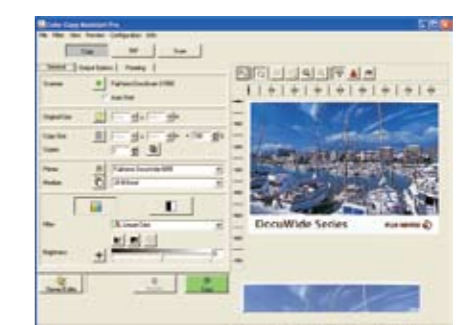


DW-Scan 3 colour density adjustment screen

● Color Copy Assistant*¹

Color Copy Assistant*¹ comes with advanced colour adjustment functions. So all you have to do is issue a printing command to a colour output device*² to colour copy.

¹ Optional, Color Copy Assistant Pro for DocuWide 1.0 is also available.
² DocuWide C436EP or the equivalent colour output device and a network environment are necessary. Consult a Fuji Xerox sales representative for the applicable models.



Color Copy Assistant Pro for DocuWide 1.0 screen